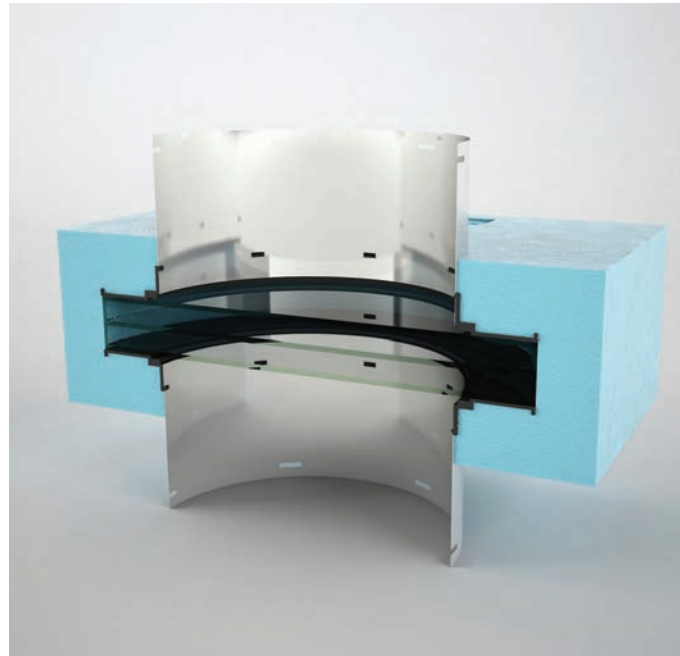
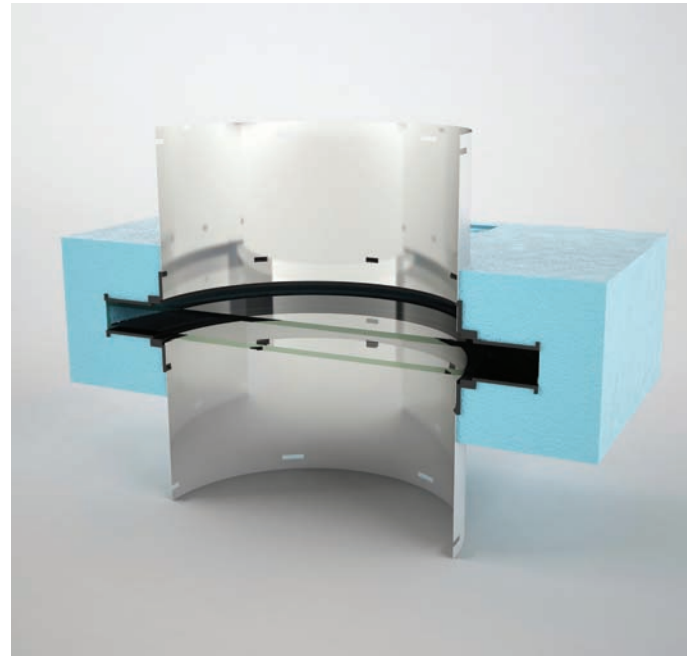


## THE LIGHTWAY BLUE PERFORMANCE RANGE

ELIMINATES CONDENSATION AND POSSIBLE  
WATER INGRESS  
MINIMIZES HEAT LOSSES AND GAINS  
IN WINTER AND SUMMER



### TYPE LW BP 0.6

Technical data:

$U = 0,6 \text{ W}/(\text{m}^2.\text{K})$  - value of the whole system

Insulation glass: double layer glass 4-16-4 (filling Argon)

Thermal insulation: Polystyrene XPS

Thickness of thermal insulation: 120 mm

Dimensions:

LW 300 - 470x470 mm

LW 400 - 570x570 mm

LW 600 - 885x885 mm

LW 800 - 1120x1120 mm

Height: 120 mm

Patent protection: Patent pending No. PV 2010 - 433

Utility model: PUV 2010 - 22789

### TYPE LW BP 0.4

Technical data:

$U = 0,4 \text{ W}/(\text{m}^2.\text{K})$  - value of the whole system

Insulation glass: triple layer glass 4-16-4-16-4 (filling Argon)

Thermal insulation: Polystyrene XPS

Thickness of thermal insulation: 140 mm

Dimensions:

LW 300 - 470x470 mm

LW 400 - 570x570 mm

LW 600 - 885x885 mm

LW 800 - 1120x1120 mm

Height: 140 mm

# HOW TO PREVENT CONDENSATION, WATER LEAKAGES AND MINIMIZE HEAT GAINS/LOSSES?



## THE LIGHTWAY BLUE PERFORMANCE RANGE

TUBULAR SKYLIGHTS  
NOT ONLY FOR PASSIVHAUS

 **lightway®**

[www.lightway.cz](http://www.lightway.cz)



[www.lightupmyroom.co.uk](http://www.lightupmyroom.co.uk)

T: 01903 250105  
M: 07803 885658  
F: 01903 238670  
info@lightupmyroom.co.uk  
Avonside Daylight, 20 Sompting Road,  
Worthing, West Sussex, BN14 9EP.

 **lightway®**



## How to provide enough natural daylight in passive houses ?



No tubular skylight of any manufacturer can reach the requirements for thermal insulation for passive houses, not even those ones with double layer diffusers.

Is it possible to install a conventional roof window in a passive house?  
Yes it is possible, but the thermal insulation sufficiency of the building would be severely compromised.

The truth is that if a thermal bridge has been created in the mantle of the passive house all the heat held by a huge amount of thermal insulation inside the building will try to flow just through this tiny space.

In an area where heat loss occurs, damp stains appear on ceilings and walls and condensation can quickly turn to mould. Once inhaled, mould spores can cause adverse effects, leading to allergies and allergic reactions.

## How to separate two different worlds of temperature that would cause condensation, a common problem with tubular skylights?

The Lightway Blue Performance tubular skylight prevents creation of dangerous thermal bridges in the connection of the structure and the thermal insulation of the building, eliminating the condensation problem.

